

integrator of
FOCUS PX

Manual
Semi-Automated
Robotic
Ultrasonic
Solutions



Fully integrated systems

MANUFACTURING SOLUTIONS

As a system integrator with a strong base in ultrasonic, we can integrate the Focus PX and offer custom solutions. The FOCUS PX is well adapted to industrial requirements as it is supplemented by a control library (FOCUS Control) which allows integrators to automate the inspection process. As well, the Software Development Kit may be used to obtain fully customized interface. In terms of hardware, the FOCUS PX ruggedness, compactness, and scalability are all important to obtain an industrial solution. TD NDE takes full responsibility for the system design. Our true value lies in our Automated UT experience, our expertise and commitment to the project success.

flexible solutions for your business needs

MARKETS

The following industrial sectors are targeted industrial sectors:

- Aerospace
- Automotive
- Bar, tube and plate
- Part manufacturing

METHOD

Opportunities that are raised are transferred to us with a detailed description of the requirements. Further discussions and visits are made in collaboration with Olympus. Our offers include as required and as agreed by Olympus:

- Feasibility Study
- CIVA Analysis
- Software Customization
- Custom Mechanical Design
- Procedure Development
- Automation
- Training
- Installation



CUSTOM SOLUTIONS

Our industrial solutions are customized to your applications. There is no one fit all solutions. Our solutions are agile and meant to be adapted to fit your environment.



INTEGRATED SOLUTIONS

We can interface to your network. Interoperability is offered to connect and communicate inspection status and results.



AUTOMATED SOLUTIONS

Automation is integrated to the level you required. Starting from scan plan generation, to part loading, data acquisition and finally to analysis. No operation is the same and flexibility is the key to our offering.

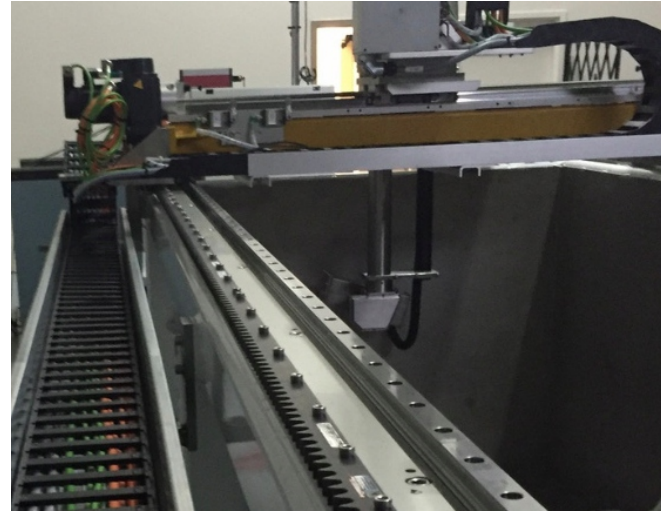


Aerospace

Scanners are adapted. Contact, Immersion, manual, semi-automated and fully automated

Composite Inspection

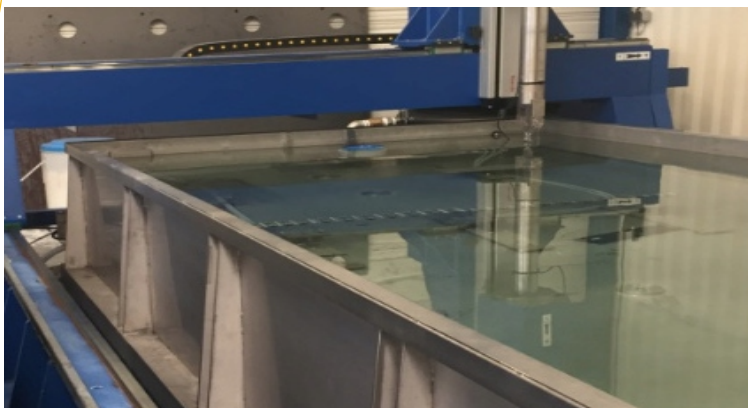
Aerospace inspection requirements are met with a variety of solutions. They are proposed based on the parts you need to inspect and the productivity requirements that have to be met.



Integrated systems that meets Airbus, Boeing & Bombardier specifications

System Types

- X-Y manual scanner
- R theta scanner
- Semi-Automated immersion scanner
- 3-5-7 axis scanner
- Rotation Table
- Kuka Robot integration for scanning or handling
- Bar Rotator
- Automation with Siemens or Galil Controller



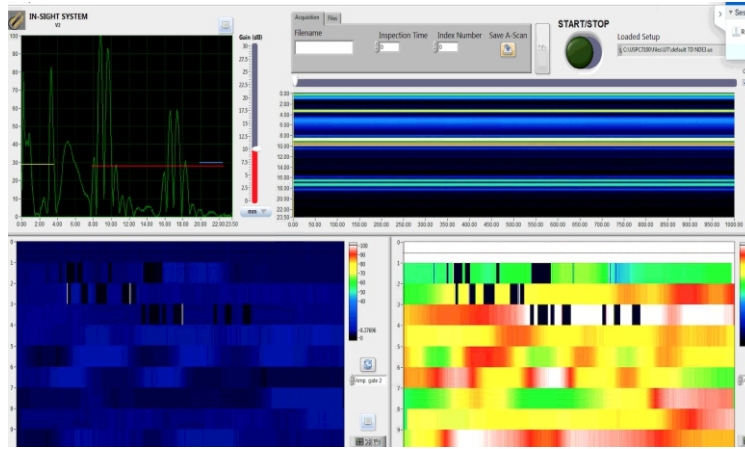
- Full immersion, local immersion, contact
- Filtration systems (heater, filters, UV lamps, softener, pump)
- Integration to existing mechanical systems
- Retrofit



Automotive

Fully Automated Systems

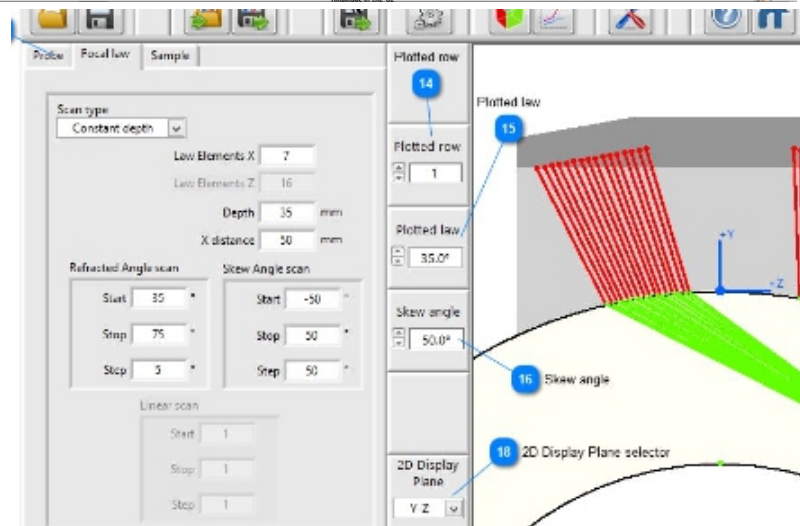
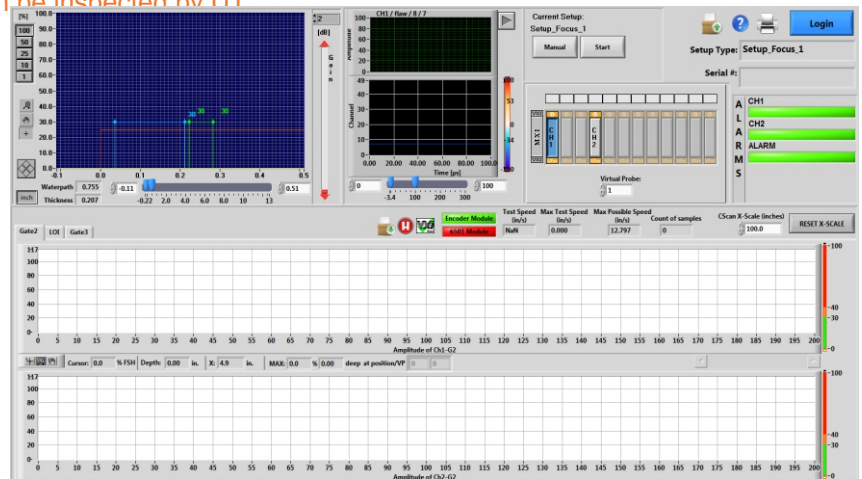
A new market based on the new requirements adaptable to Phased Array Inspections. We have been working on a few applications with the US sales force. All applications are made with a custom interface and a fully automated handling and inspection system. Diagnostic are integrated. System can include network integration, automated reporting, and statistical analysis.



Fully automated solution for high production work

Example of safety parts that can be inspected by IIT

- Camshafts
- Air bag tubes
- Cylinder Heads
- Sun gears, synchronizing rings
- Valve shafts
- Steering housings and columns
- Motor block
- Castings
- Ball bearing
- Cardan shafts
- Piston and piston pins





Bar, Tube and Plate Inspections

On-line and Off-line Inspections

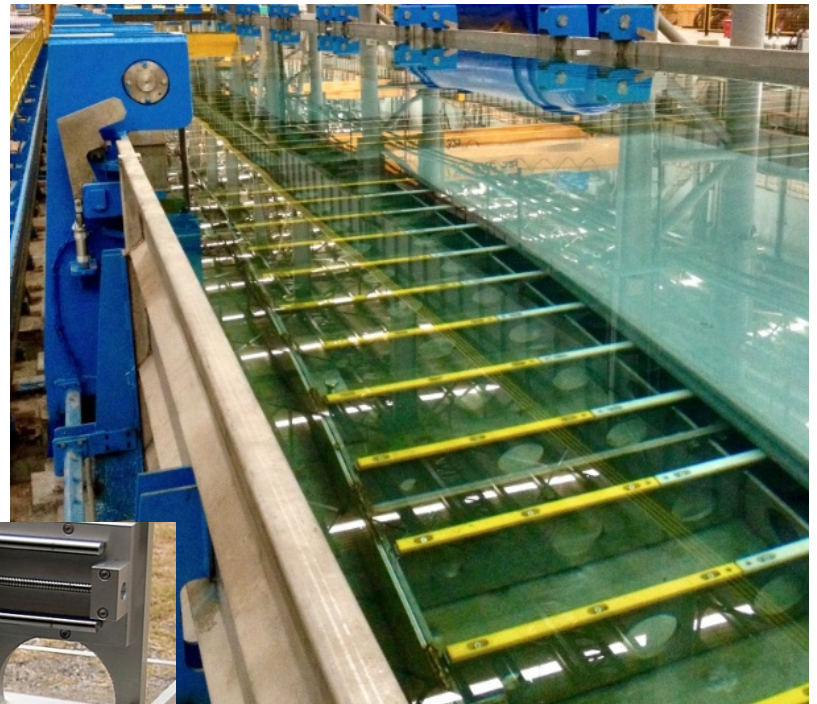
Our bar, tube and plate solutions can complement your Quickscan solutions. Focus PX bar, billet and tube systems are better adapted for smaller systems and they can be adjusted to fit a smaller production requirements. Plate inspections, however, can be made to fit any speed requirements.



a mechanic adapted to fit your plant and inspection requirements

APPLICATIONS

- Tube Thickness
- Tube Ovality, Excentricity, dimension
- Tube welds inspection
- End of Tube system
- Bar dimensional
- Bar quality inspection
- Al, Ti, Steel, Zirconium Plate



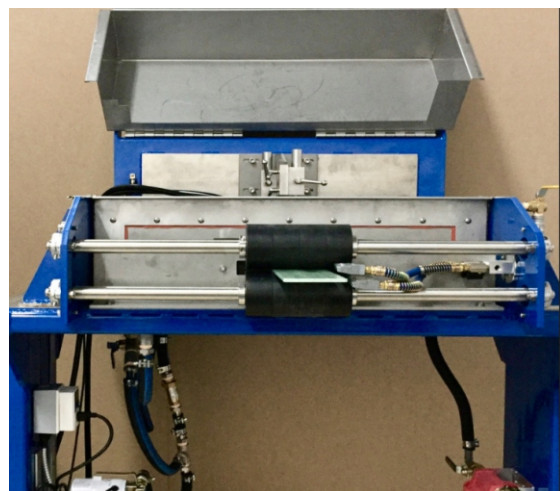


Part Manufacturing

Systems made to fit other manufacturing inspection requirements

APPLICATIONS

- Windmill blade material (carbon and fiberglass)
- Pressure Vessel
- High Pressure Cylinder
- Castings
- Turbine Blades
- Wheel Axes
- Laser Seam Welds
- Friction Steer Welds
- Automated Thickness measurements
- Adhesive Joints



Manufacturing inspection solutions

2029 Michelin
Laval, Quebec
Canada, H7L 5B7
450.688.1118 ph
www.tdn.de.com